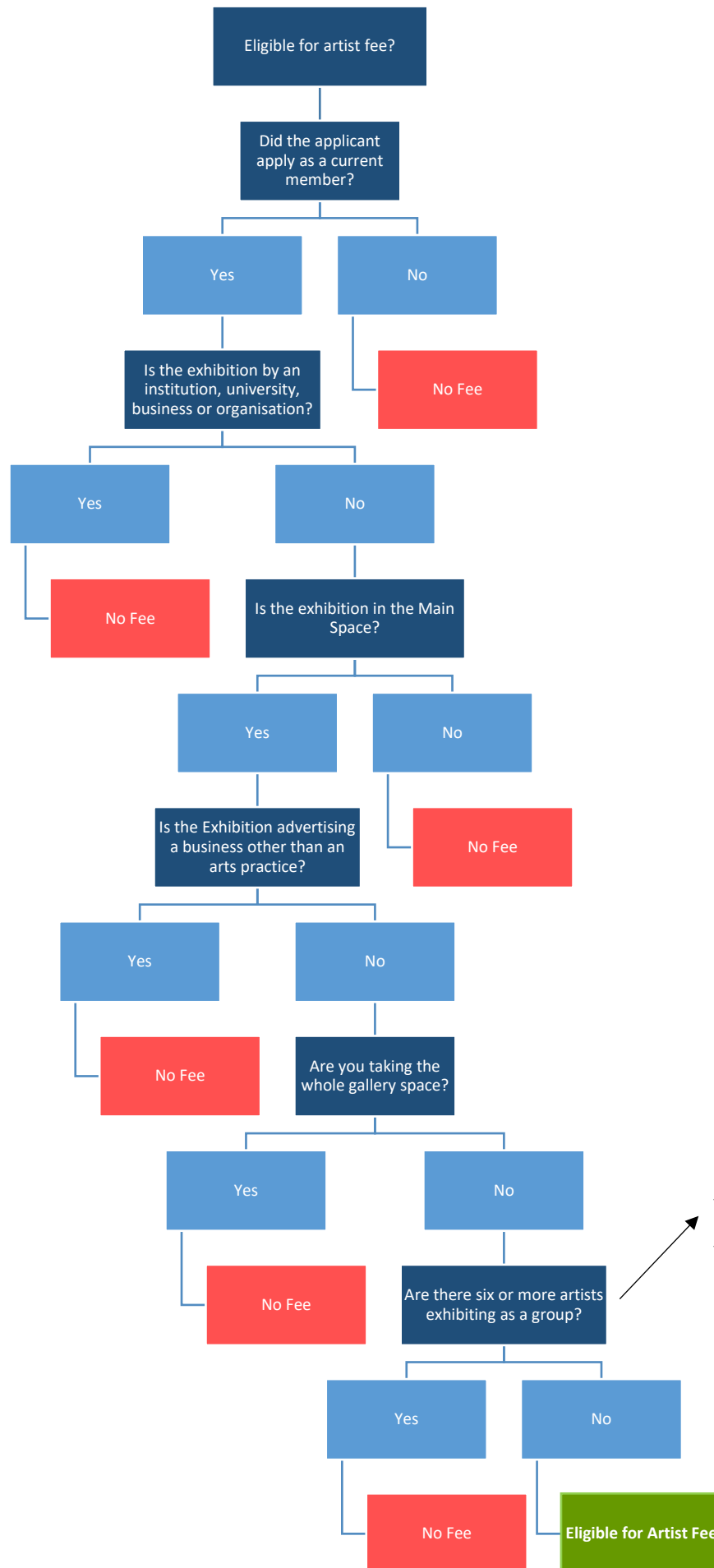


Umbrella Studio Association Inc – Artist Fee Policy



Please note: Even if the applicant is a single artist or organiser, if there are more than 6 artists proposing to exhibit artworks, this fee policy applies.

Umbrella Studio Association Inc – Artist Fee Policy

|  |                          |
|--|--------------------------|
| <p><b>Case:</b> James Cook University has a group of 4 graduating artists to exhibit in the Main Space. The University submitted an application to exhibit. They will not be eligible for an artist fee.</p>   | <p><b>Ineligible</b></p> |
| <p><b>Case:</b> A photographer and member who has a photography business has an exhibition in the Main Space. As the applicant is a sole trader with an artistic practice, they would be eligible.</p>   | <p><b>Eligible</b></p>   |
| <p><b>Case:</b> A group of six artists – all members – apply and are successful for a Main Space exhibition. They are ineligible as there are six or more artists exhibiting.</p>  | <p><b>Ineligible</b></p> |
| <p><b>Case:</b> A member has a successful application for show that goes across both spaces of the gallery – Main and Access (and possibly Vault). This member is not eligible for an artist fee as they are taking up the entire gallery – in fact, this situation would normally cost the exhibitor \$3,000.</p> | <p><b>Ineligible</b></p> |
| <p><b>Case:</b> A member has a successful exhibition application in the access space. They will not be eligible as only main space shows are eligible.</p>   | <p><b>Ineligible</b></p> |
| <p><b>Case:</b> A photographer works for a larger business with two or more employees/owners (including themselves), is a member, and has a Main Space exhibition – they would be ineligible, and the business should pay sponsorship to Umbrella Studio.</p>  | <p><b>Ineligible</b></p> |
| <p><b>Case:</b> A member has a successful exhibition application in the access space. They will not be eligible as only main space shows are eligible.</p>   | <p><b>Ineligible</b></p> |
| <p><b>Case:</b> Four members have successful exhibition application in the Main Space of the gallery. Two are university teachers, two are school teachers. They would be eligible for an artist fee split four-ways.</p>  | <p><b>Eligible</b></p>   |